

Loudspeakers and Accessories



Search

Home | Single Drivers / Accessories | Kits | Car-Hifi | High End | Industry | Public Address |

Single Drivers / Accessories

New products

Fullrange Systems

B 200 6 OHM
 BG 13 P 8 OHM
 BG 17 8 OHM
 BG 20 8 OHM
 F 8 SC 8 OHM
 FR 10 4 OHM
 FR 10 8 OHM
 FR 10 F 4 OHM
 FR 10 HM 4 OHM
 FR 10 HM 8 OHM
 FR 10 WP 4 OHM (black)
 FR 10 WP 4 OHM (white)
 FR 12 4 OHM
 FR 12 8 OHM
 FR 13 4 OHM
 FR 13 WP 4 OHM (black)
 FR 13 WP 4 OHM (white)
 FR 16 WP 4 OHM (black)
 FR 16 WP 4 OHM (white)
 FR 16 WP CL 100 V
 FR 6,5" 8 OHM
 FR 7 4 OHM
 FR 8 4 OHM
 FR 8 7 4 OHM
 FR 8 8 OHM
 FR 8 JS 8 OHM
 FR 8 WP 4 OHM (black)
 FR 8 WP 4 OHM (white)
 FR 8 WP 8 OHM (white)
 FR 9.15 4 OHM
 FRS 10 WP 4 OHM (black)
 FRS 10 WP 4 OHM (white)
 FRS 10 WP 8 OHM (black)
 FRS 10 WP 8 OHM (white)
 FRS 5 8 OHM
 FRS 7 4 OHM
 FRS 7 8 OHM
 FRS 7 S 8 OHM
 FRS 7 W 8 OHM
 FRS 8 4 OHM
 FRS 8 8 OHM
 FRS 8 M 8 OHM
 FRWS 5 4 OHM
 FRWS 5 8 OHM
 FRWS 5 R 8 OHM
 FRWS 5 SC 8 OHM
 K 50 8 OHM
 K 50 WP 50 OHM
 K 50 WP 8 OHM
 K 64 WP 50 OHM
 K 64 WP 8 OHM
 K 64 WPT 8 OHM

FRS 7 S 8 OHM

Art. No. 2018

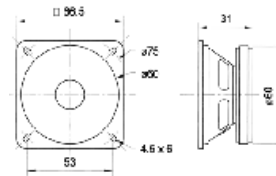
6.5 cm (2.5") **full-range** speaker with balanced [frequency response](#) and very good highs. Especially suitable as built-in speaker for music reproduction and as driver for 100 V network column speakers. Very low resonance [frequency](#).

Typical applications:

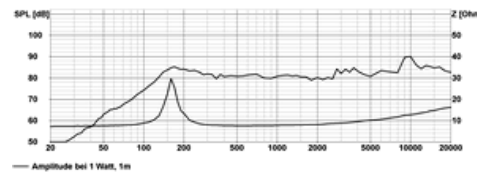
- Narrow network column speakers
- Control speaker for electronic devices
- Model construction
- Electronic musical instruments

Attributes:

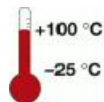
- Water proof [cone](#)
- Metal basket
- 100 °C temperature resistant



sketch



frequency- and impedance response



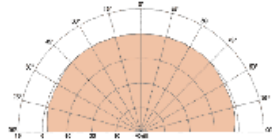
Technical Data:

Rated power	8 W
Maximum power	15 W
Nominal impedance Z	8 Ohm
Frequency response	120–20000 Hz
Mean sound pressure level	84 dB (1 W/1 m)
Maximum cone displacement	3 mm
Resonance frequency fs	150 Hz
Magnetic induction	1,2 T
Magnetic flux	160 μWb
Height of front pole-plate	2 mm
Voice coil diameter	14 mm
Height of winding	5 mm
Cutout diameter	61 mm
Net weight	0,2 kg
D.C. resistance Rdc	7,2 Ohm
Mechanical Q factor Qms	5,38
Electrical Q factor Qes	2,01
Total Q factor Qts	1,46
Equivalent volume Vas	0,9 l
Effective piston area Sd	22 cm ²
Dynamically moved mass Mms	0,8 g
Force factor Bxl	1,8 T m
Inductance of the voice coil L	0,6 mH
Heat resistance	-25 ... 100 °C

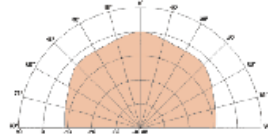
Similar Products

[FR 7 4 OHM](#) [FRS 7 4 OHM](#)
[FRS 7 8 OHM](#) [K 64 WP 50 OHM](#)
[K 64 WP 8 OHM](#) [K 64 WPT 8 OHM](#)

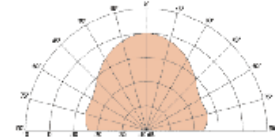
- R 10 S 4 OHM
- R 10 S 8 OHM
- R 10 SC 4 OHM
- R 10 SC 8 OHM
- SC 4.7 ND 4 OHM
- SC 4.7 ND 8 OHM
- SC 5.9 8 OHM
- SC 5.9 ND 4 OHM
- SC 5.9 ND 8 OHM
- SC 8 N 8 OHM
- SL 713 4 OHM
- SL 87 WPM 4 OHM
- SL 87 WPM 8 OHM



[radiation pattern 2000 Hz](#)



[radiation pattern 5000 Hz](#)



[radiation pattern 10000 Hz](#)

Woofers

- Bass Midranges
- Cone Midranges
- Dome Midranges
- Horn Midranges
- Ribbon Tweeter
- Dome Tweeters
- Horn Tweeters
- Cone Tweeters
- Coaxial Speakers
- Miniature Speakers
- Magnetically Shielded Speakers
- Waterproof Speakers
- Ceiling Speakers
- Re-Entrant Horn Speakers
- Slim Column Systems
- Cabinet-housed speakers
- PA Speakers
- Structure-borne drivers
- Crossovers
- Crossover Components
- Accessories
- Other Products
- Archive

