



Model Sounds Inc.

SFXPC4.0.1 Windows Application

Installation Guide

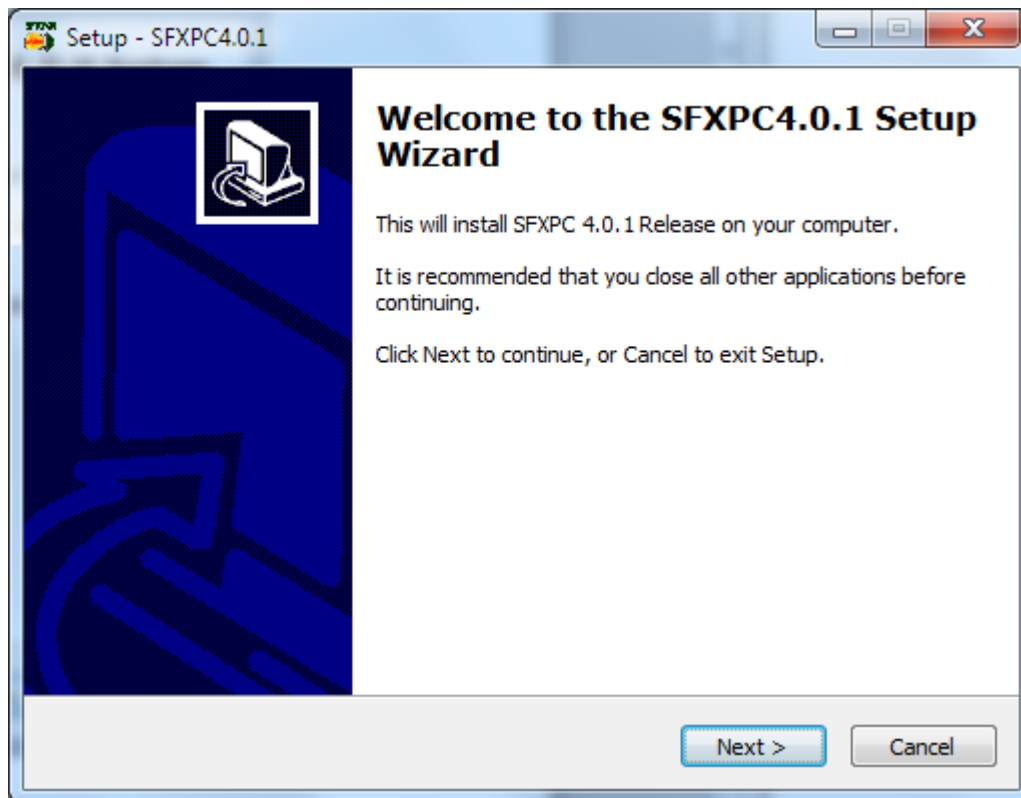
Date: April, 2012

© Model Sounds™ Inc., 2012

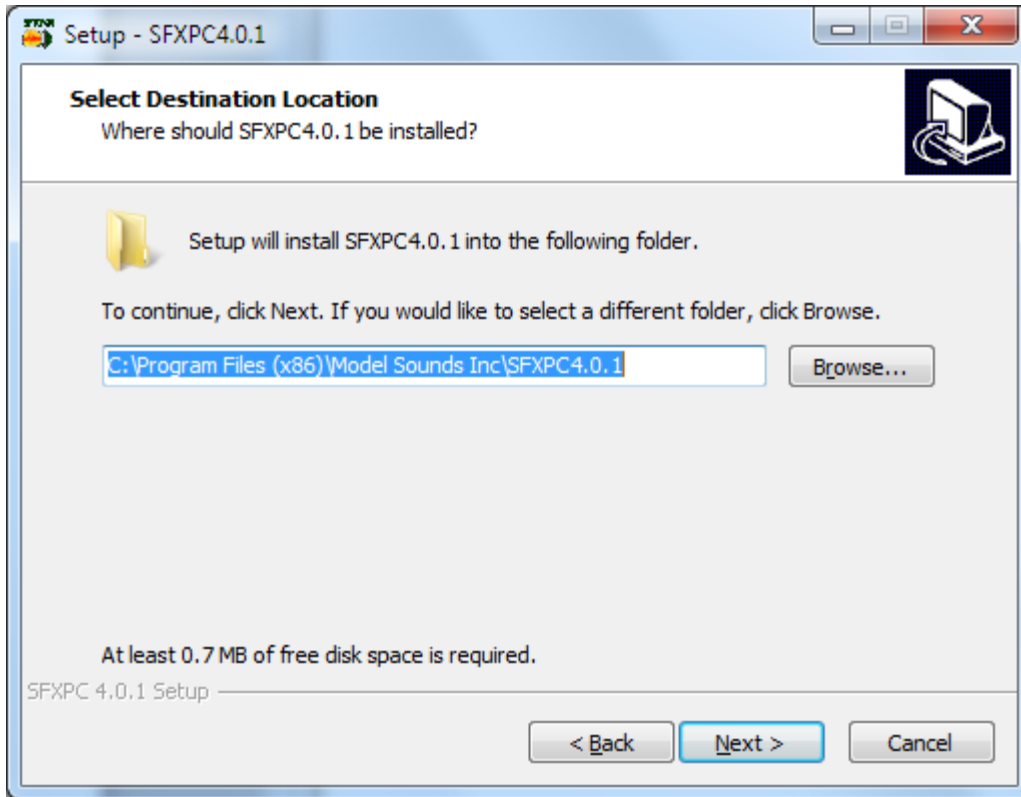
INSTALLING THE SFXPC4 WINDOWS APPLICATION PROGRAM

1. Insert the SFXPC4 CD-ROM into your CD/DVD drive.
2. Wait several seconds – the SFXPC4 installer program should start – follow the instructions on screen.
3. If it does not automatically start (you may have AutoPlay switched off for that drive), navigate to that drive using Windows Explorer and then double click on the **SFXPC4.0.0Setup.exe** icon. Then follow the on-screen instructions.
4. The full manuals are available in PDF format in the Manuals folder.
Please read them before using the Software or the SFX7 Sound Effects Module.
5. The default installation folder for the SFXPC4 Application is
“C:\Program Files (x86)\Model Sounds Inc\SFXPC4.0.0”.
The Installer program also installs the SFXPC4 manuals in
“C:\Program Files (x86)\ Model Sounds Inc\SFXPC4.0.0\Manuals”

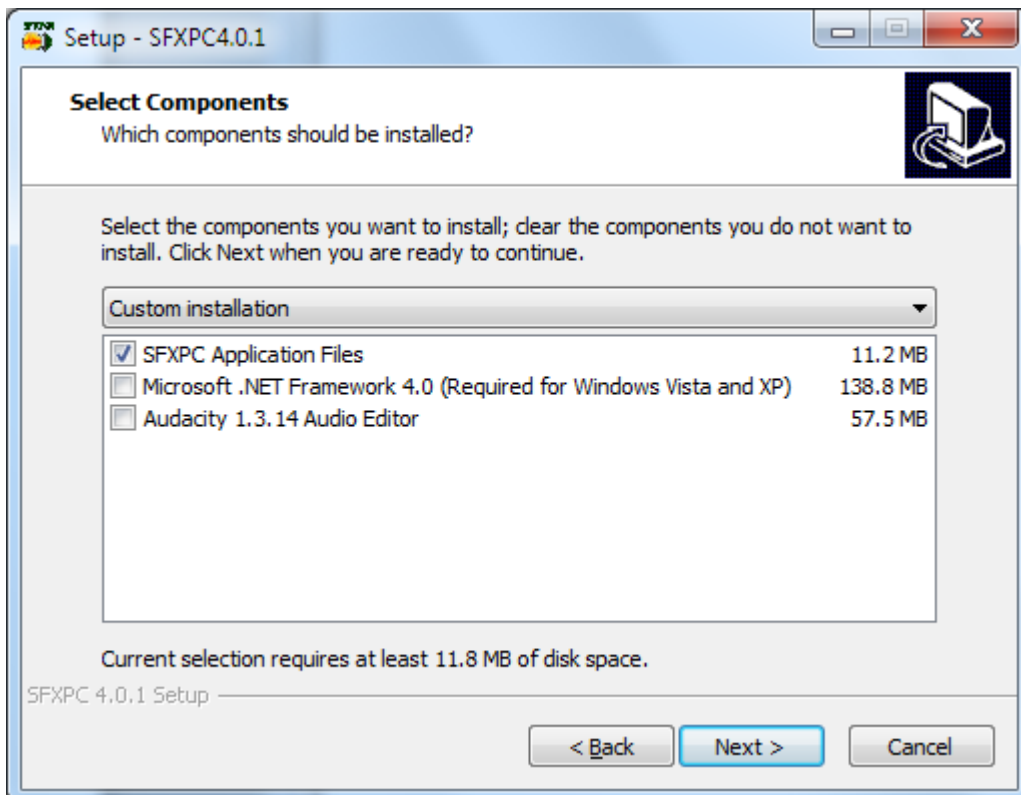
This first window will appear similar to this – the exact release number may be different :



Click the “Next” button. The following Window appears :



Leave this default location for the installation unless you have a very good reason to change it.
Click the “Next” button. The following Window will appear :

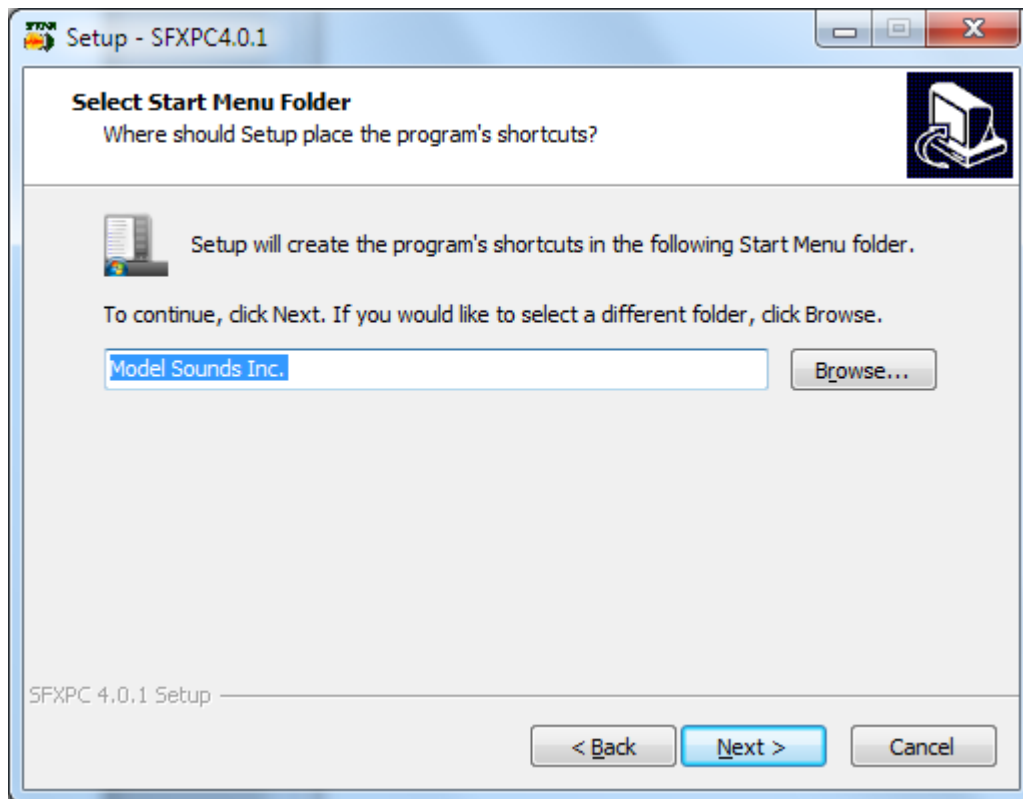


You must select the **SFXPC Application Files**. The components are listed separately so that you can come back at a later time to re-install any of them.

The Microsoft .NET Framework 4.0 is not required for Windows 7 as it is included in the OS, but it should be selected for Windows XP or Vista, unless you have installed it, or a later version, already.

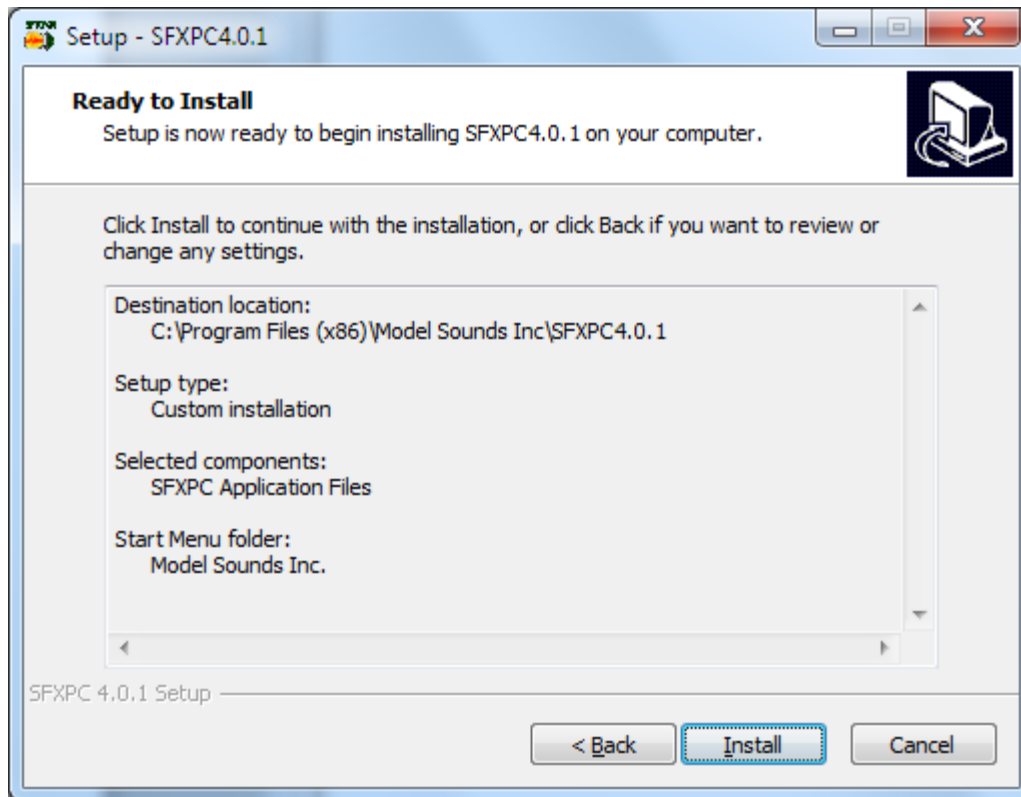
The optional free audio editor Audacity can be installed (recommended) at your option now or at any time later.

Click on the “Next” button. The following Window will appear :

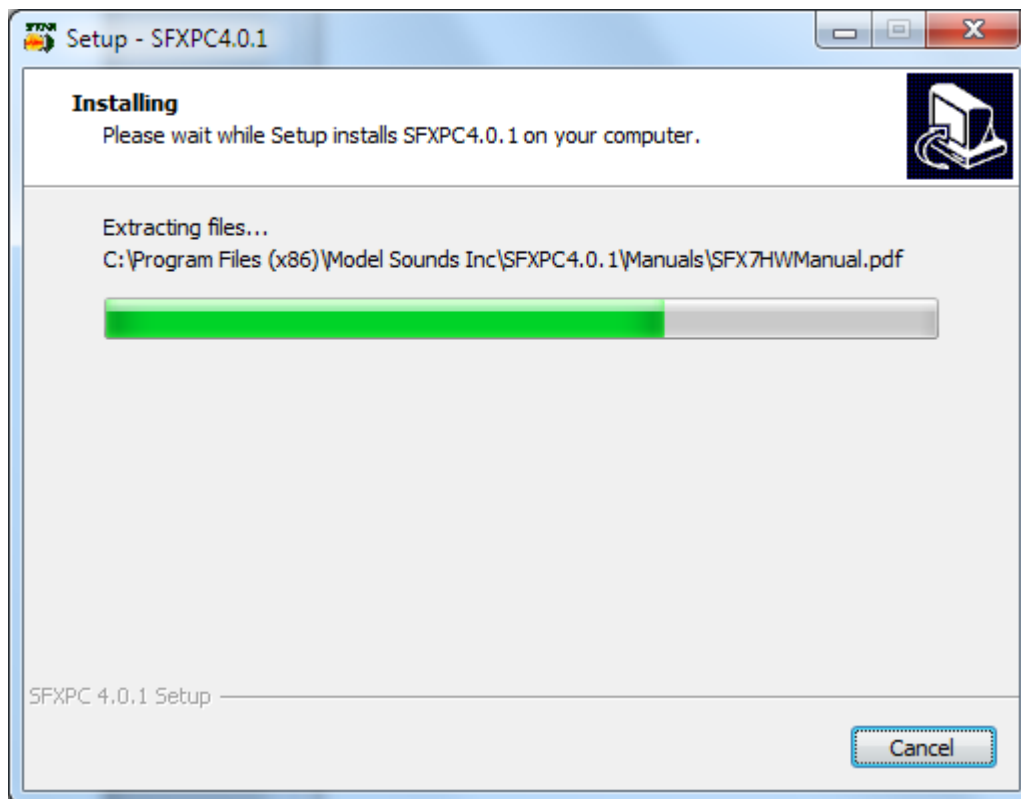


It is recommended to leave the Start menu folder location at the default value.

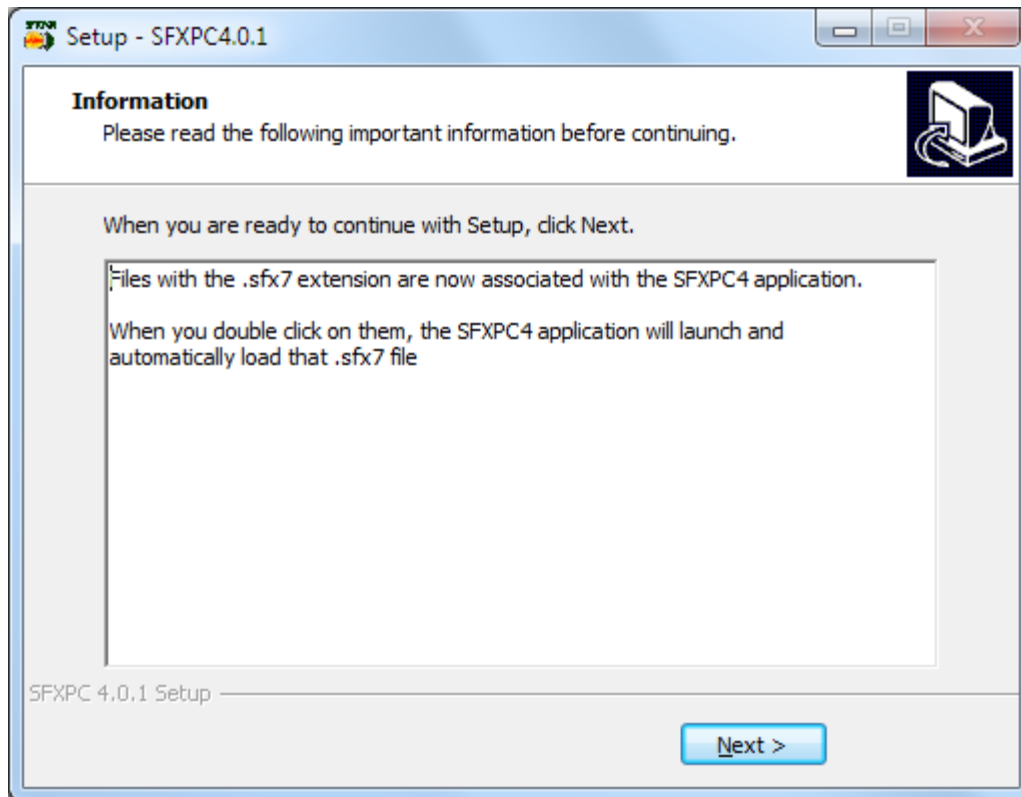
Click Next – the next window will appear.



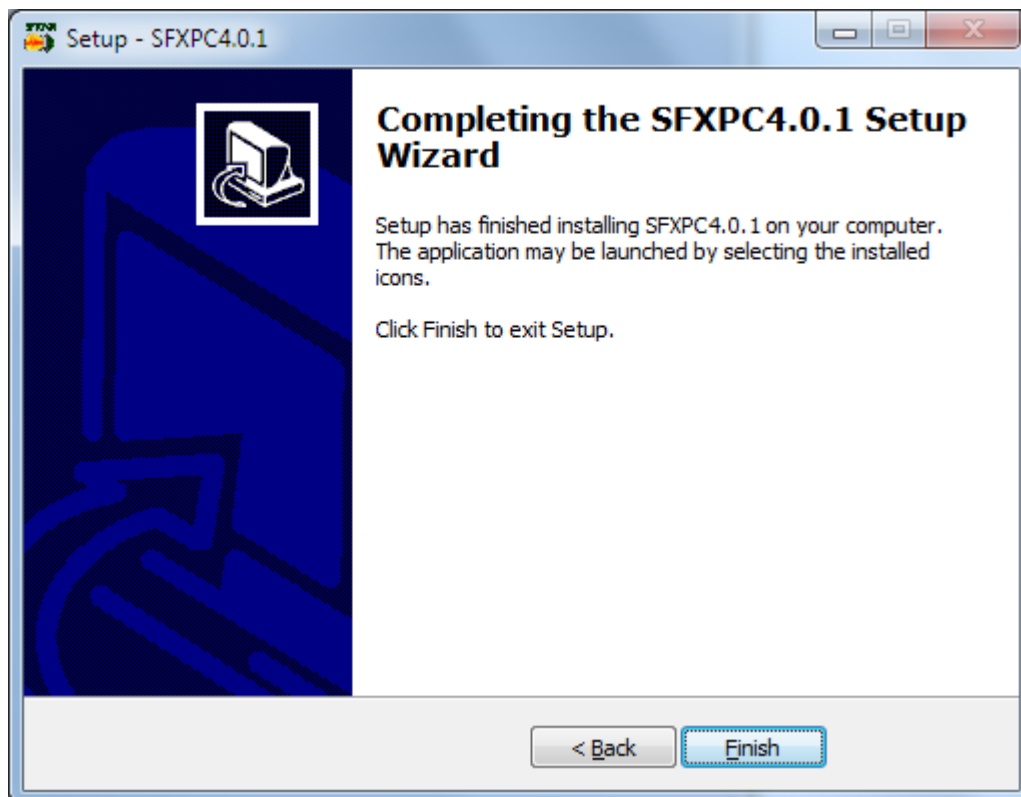
Click on the “Install” button. The next Window will appear :



When it has finished the installation, the Next Last Window will appear :



And finally the Finish Window will Appear



Click the "Finish" button.

INSTALLING THE SOUND MODULE USB DRIVERS

The SFX7 does not require any custom USB drivers as the USB drivers it requires are already part of any Windows Operating System (Windows XP or later). When you first connect the SFX7 sound module to a USB port on your computer you will see a message that says “Installing new device drivers”. After a few seconds it will say “New device drivers installed – your hardware is ready to use”.

If, at a later stage, you plug it into a different USB port, these messages may repeat – this is perfectly OK.

SFX7 USB Driver Classes (Advanced Computer Users Only)

For those users who are more familiar with USB Classes, the SFX7 is a USB Composite device comprising a HID (Human Interface Device) USB Device class and a USB MSD (Mass Storage Device) Device class.

Although the SFX7 sound module is clearly not a Human Interface Device (mouse/keyboard etc.), the HID class and USB protocols are used to communicate with the module so that a custom USB driver is not required for that purpose.

The second part of the USB composite device is a USB Mass Storage Device which makes it look like a removable hard drive. This allows easy file transfers between the SFXPC4 SW and the SFX7 sound module.